



# Keeping Connected with ISI

OTM/TM Newsletter – Spring 2007

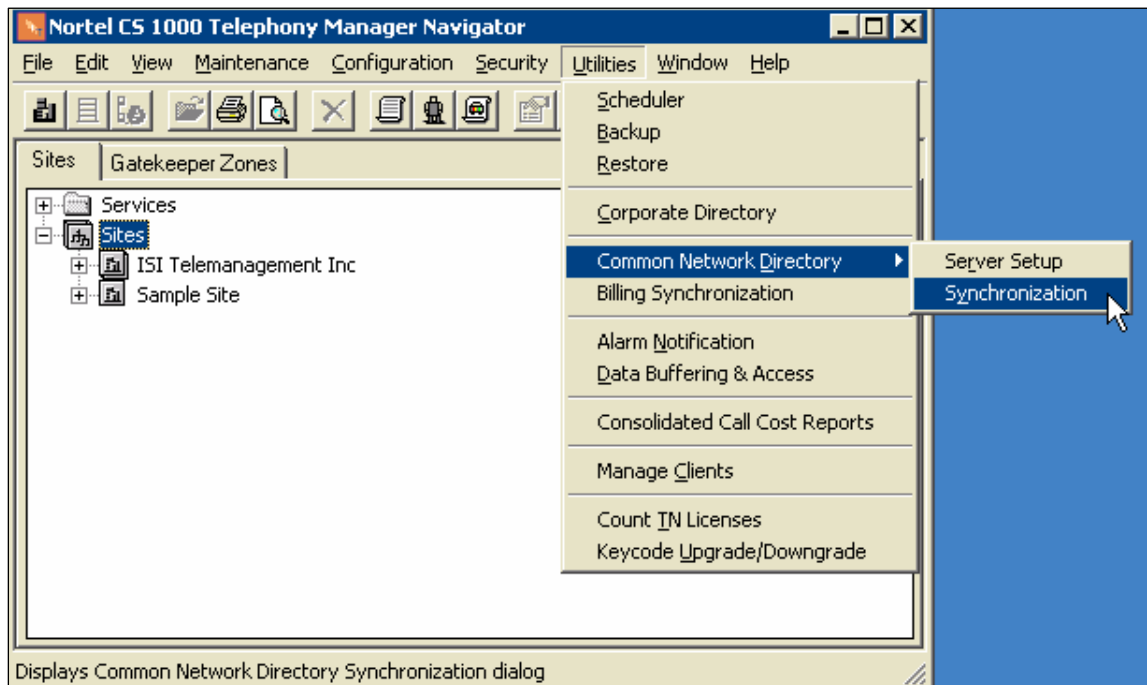
## TM CND and TBS Billing Synchronizations

CS 1000 Telephony Manager provides new methods for synchronizing PBX data with other databases within the product. The software includes the Common Network Directory (CND) as the single depository of employee data for Nortel applications including Telephony Manager. The CND also provides LDAP Directory services that were available with OTM. Additions and modifications to telephone names and employee information should be made within the CND as this information can then be accessed from within the Telephone Manager module for updating TM Station records. Also, if the Telecom Billing System module is utilized, CND must be scheduled to synchronize with the TBS Employee Editor. This will provide TBS with name, extension and employee information for display on the TBS Call Accounting reports. Use the procedures below to perform the two synchronizations.

### Synchronize CND with PBX Information

1. From the main TM Navigator window select the **Utilities** menu as shown in **Figure 1**.
2. Proceed to **Common Network Directory – Synchronization**. The **Synchronization Schedule** screen will appear as in **Figure 2**.

Figure 1 – CND Synchronizations



3. Select Systems to be synchronized.
4. Click the **Set Schedule** button.

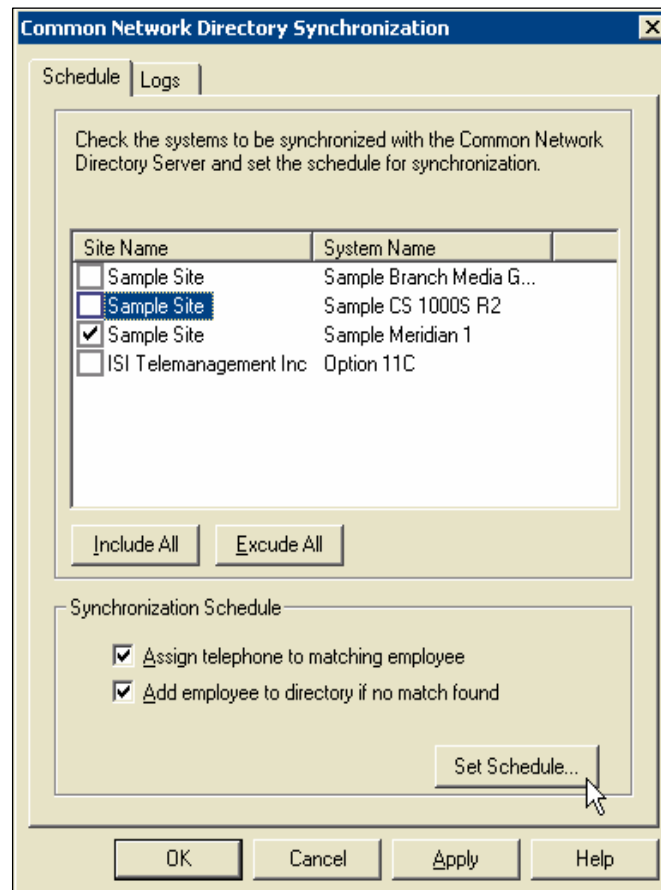


# Keeping Connected with ISI

OTM/TM Newsletter – Spring 2007

5. Define the Scheduler as in **Figure 3**. The example shows that the synchronization job will run Daily at 6AM. Initially, this will populate the CND with current PBX extension and CPND data. Thereafter, this will record any changes made in the PBX over the past 24 hours to update the CND.

**Figure 2 – Schedule Systems to Synch**

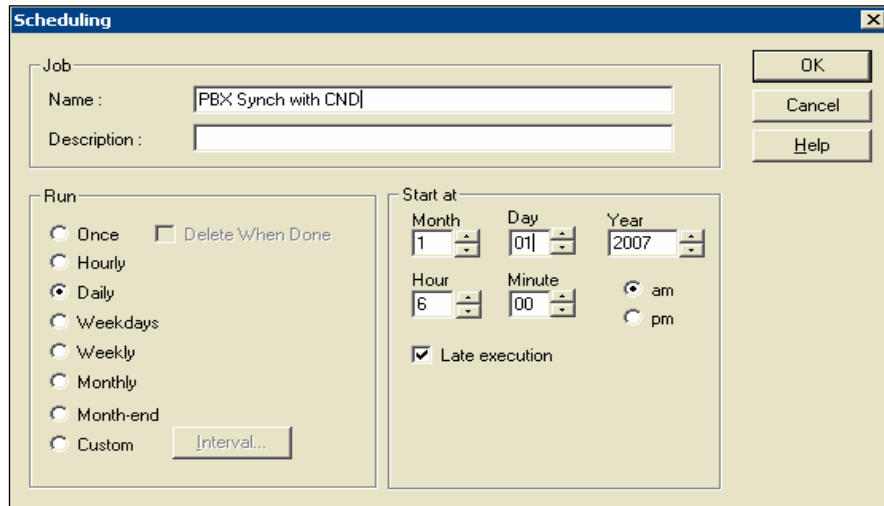




# Keeping Connected with ISI

OTM/TM Newsletter – Spring 2007

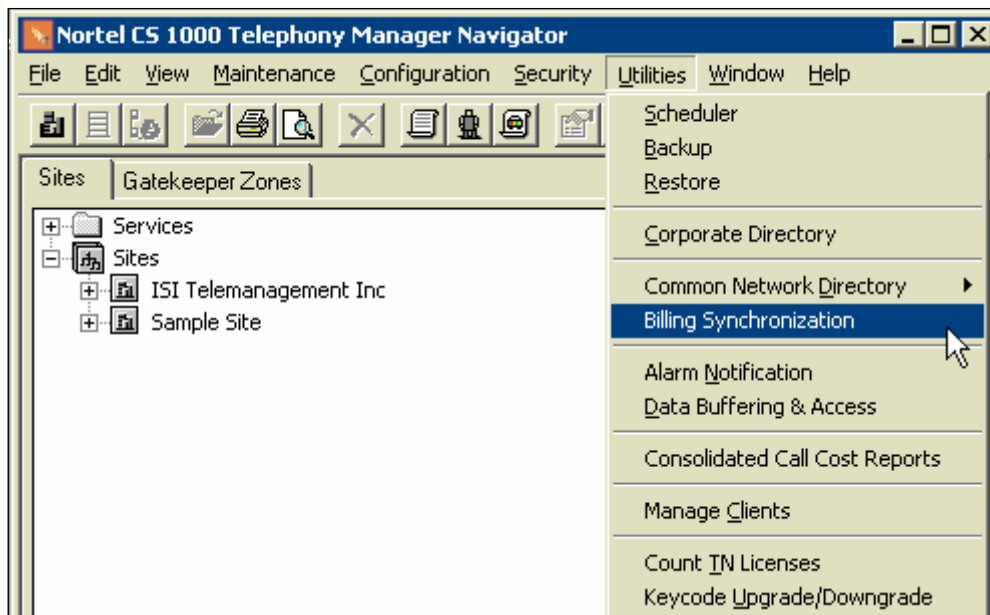
Figure 3 – Schedule the Synchronization



## Synchronize the TBS with CND Information

1. From the main TM Navigator select the **Utilities** menu and choose **Billing Synchronization** as shown in Figure 4.
2. Figure 5 will appear to configure the scheduling of the Synchronization.

Figure 4– TBS Synchronization



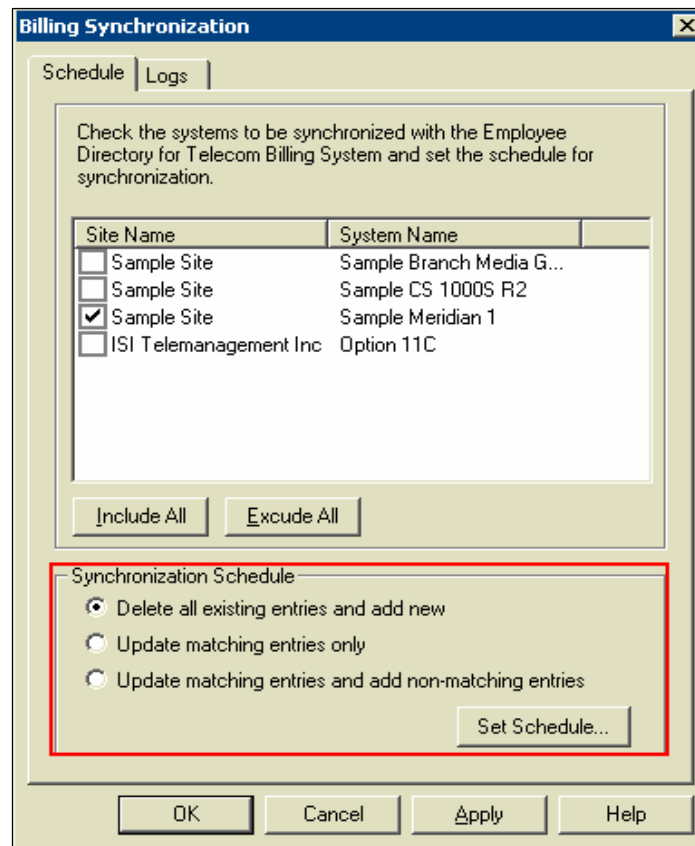


# Keeping Connected with ISI

OTM/TM Newsletter – Spring 2007

- Note in **Figure 5** the **Synchronization Schedule** options that are available for the scheduling. Select the correct option.
  - **Delete all existing entries and add new** – completely re-initializes the TBS Employee Directory and recreates it with Employee information from the CND.
  - **Update matching entries only** – updates only the entries that match by Common Name between the CND and the TBS Employee Directory
  - **Update matching entries and add non-matching entries** – updates the entries that match between the two databases, and also appends to the TBS Employee Directory any entries that do not match
- Click the **Set Schedule** button. The example in **Figure 6** shows the Billing synchronization job to launch Daily at 7am.

**Figure 5** – Select Systems for Scheduling

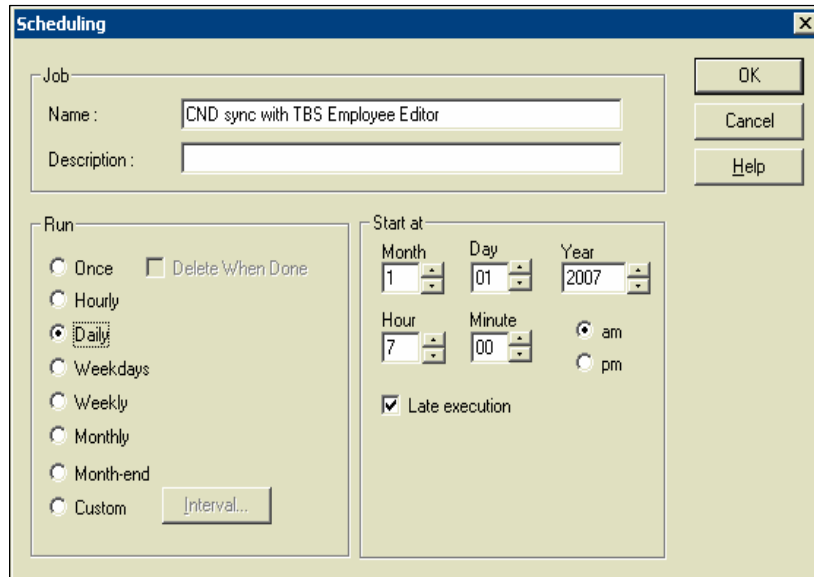




# Keeping Connected with ISI

OTM/TM Newsletter – Spring 2007

**Figure 6** – Schedule Billing Synchronization (2)



Note: For TM 3.0 systems, the loaded software must include current patches. There is a problem with the Billing Synchronization utility not appearing from the Utility menu that is corrected with the patch.